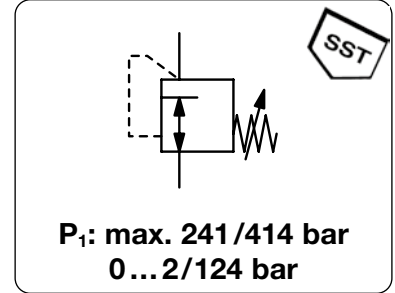


<b>Description</b>	Diaphragm-operated high pressure regulator of small and light design.	
<b>Adjustment</b>	by black plastic knob	
<b>Relieving function</b>	non-relieving	<b>Weight</b> aluminium 200 g, brass 430 g
<b>Gauge port</b>	1/4" NPT for inlet and outlet pressure	<b>Mounting position</b> any
<b>Media</b>	<b>RH0</b> corrosive or non-corrosive gases up to purity 5.0 max. 241 bar	<b>RH1</b> compressed air, non-corrosive gases or liquids max. 414 bar
<b>Supply pressure</b>	< 1 x 10 <sup>-6</sup> mbar l/s He	< 1 x 10 <sup>-4</sup> mbar l/s He
<b>Leakage rate</b>	-40 °C to 60 °C / -40 °F to 140 °F	-25 °C to 75 °C / -13 °F to 167 °F
<b>Temperature range</b>	brass, optionally stainless steel or aluminium	nickel-plated aluminium
<b>Body</b>	diaphragm made of stainless steel	piston with EPDM o-ring, as option NBR/Buna-N or FKM
<b>Regulating system</b>	PFA or CTFE as option	CTFE or Vespel as option
<b>Valve seat</b>	brass, optionally stainless steel	stainless steel and aluminium
<b>Inner valve</b>		



Dimensions			K <sub>v</sub> -value (m <sup>3</sup> /h)	Flow rate m <sup>3</sup> /h	l/min	Connection thread NPT	Pressure range bar	Order number
A	B	C						

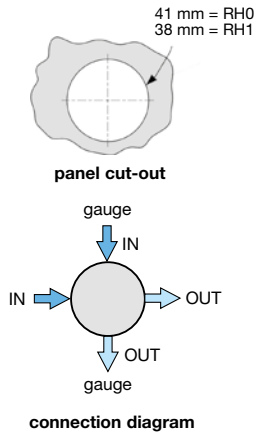
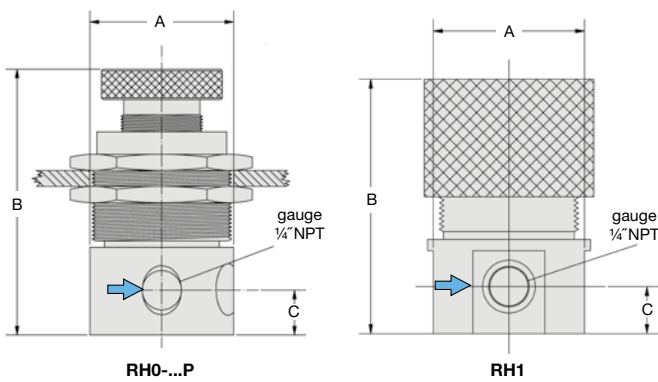
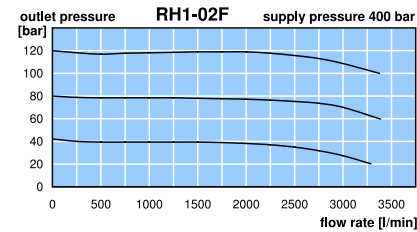
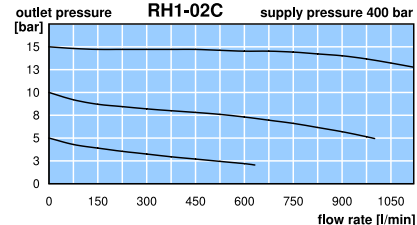
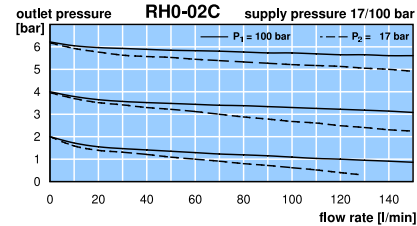
High pressure regulator 241 bar						for gases, non-relieving brass, stainless steel diaphragm	<b>RH0</b>	
41	82	14	0.05	9 <sup>*1</sup>	150 <sup>*1</sup>	1/4" NPT	0.2 ... 2 0.4 ... 4 0.6 ... 7	<b>RH0-02A</b> <b>RH0-02B</b> <b>RH0-02C</b>

High pressure regulator 414 bar						for gases and liquids, non-relieving aluminium, piston with EPDM	<b>RH1</b>	
41	76	13	0.05	84 <sup>*2</sup>	1400 <sup>*2</sup>	1/4" NPT	0.5 ... 5 0.5 ... 10 1.5 ... 15	<b>RH1-02A</b> <b>RH1-02B</b> <b>RH1-02C</b>
41	76	13	0.05	192 <sup>*3</sup>	3200 <sup>*3</sup>	1/4" NPT	4.0 ... 48 8.0 ... 83 10 ... 124	<b>RH1-02D</b> <b>RH1-02E</b> <b>RH1-02F</b>



### Special options, add the appropriate letter

1/8" NPT	connection thread	für RH0	RH0-01.
aluminium body		für RH0	RH0-02. A
stainless steel body		für RH0	RH0-02. S
CTFE seat		für RH0	RH0-02. X52
CTFE seat	for stainless steel body	für RH0	RH0-02. SX52
Vespel seat		für RH1	RH1-02. X45
NBR o-ring		für RH1	RH1-02. N
FKM o-ring		für RH1	RH1-02. V
free of grease and oil	suitable for oxygen,	für RH0	RH0-02. L
for oxygen	especially cleaned,	für RH1	RH1-02. 15
brass pressure gauge	inlet side	outlet side	RH. -02. GM
SST pressure gauge	inlet side	outlet side	RH. -02. G
for panel mounting		für RH0	RH0-02. P



\*1 at 100 bar supply pressure and 6 bar outlet pressure  
\*2 at 400 bar supply pressure and 15 bar outlet pressure  
\*3 at 400 bar supply pressure and 120 bar outlet pressure